

Euro-ProLoc Engineered timber flooring is delivered with instructions in the form of illustrations. The following instructions show a floated installation.

We have split this into 4 areas:

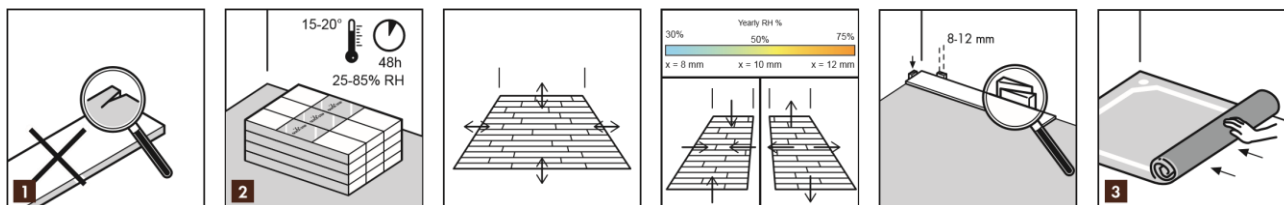
- Preparation
- Installation
- Finishing
- Maintenance

We recommend that you read through this information carefully while studying each illustration. In case of doubts or questions please contact your Euro-ProLoc supplier, Just Hardwood Floors Ltd.

BEFORE YOU START INSTALLING EURO-PROLOC:

Prefinished Engineered timber flooring is an interior product, and should be taken care of prior to, during and after installation. The installation of your Engineered Timber floor should be done after all painting and other wet works have been done. If other trade works are still to be carried out after installation, a covering such as Ram Board should be placed on top of the Euro-ProLoc to protect it from damage. Under no circumstances should an adhesive tape be used to secure any material cover directly to the prefinished timber surface. The adhesive can and does harm the lacquer or oil finish surface.

PREPARATION



STEP 1:

Before you start your installation, make sure you have received the correct Euro-ProLoc colour that you ordered before starting the installation. It is always a good idea to store one end-label together with your invoice.

Do not install any plank that has a damaged surface, edge or lock joint. Check every panel carefully before, and during the installation, preferably in daylight. Please note that wood is not a homogeneous material. There will be differences between each individual plank, just as there are differences between every tree. The will besap wood, knots and cracks in the Euro-ProLoc range. These are natural features of wood and cannot be considered as a product fault. Therefore, you should always check if you have the right impression of what the floor is going to look like before installation. If a Euro-ProLoc plank has been installed, it is considered as accepted and any defects or colour variation affecting this plank cannot form any grounds for complaint. We recommend that the panels are mixed from several packs during installation.

Euro-ProLoc
Premium Oak Flooring

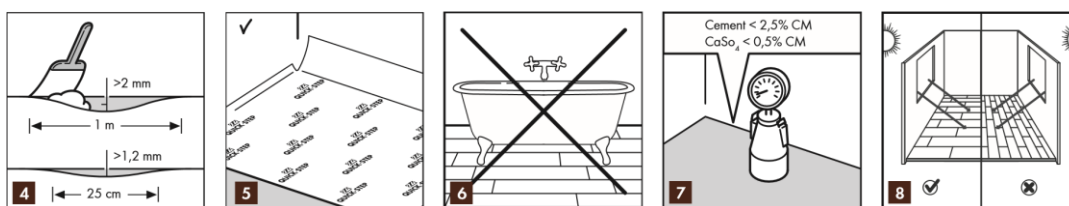


STEP 2:

After receiving the flooring packs, these should be acclimatised. This has to be done unopened and stored in a flat position, free from the wall and flooring prior to installation. It is recommended to store the flooring at a normal room temperature (15-20°C) and a relative humidity level of between 25-85%, for a minimum of 48 hours, prior to installation. A Euro-ProLoc Engineered Timber floor is composed of natural wood and will naturally expand and contract based upon changes in the relative humidity. The dimensional variation of an installed floor will be slightly more in width compared to the length. For example: at 20°C and a RH between 40-60%, the movement is limited. Euro-ProLoc is a wood flooring product that is produced and delivered with a moisture content to cope with a RH between 25-85%. In a dry climate, (for example in the Nordics during wintertime, the RH might drop below 25% and in summertime rise above 70%). This will create movement in your floor surface. To secure enough clearance for this natural movement and to avoid opening joints, squeaking, etc. always keep an expansion gap of 10 mm around the walls, thresholds, staircases, pipes, etc. during the installation of a normal-sized residential room. Use the spacers of the installation kit to keep the correct clearance. Installing in wintertime in very low RH, the expansion gap can be lowered to 8 mm (low RH = floor shrinks). If installing during the summer months when there is a high RH level, the expansion gap should be increased up to 15 mm (high RH = floor expands). The clearance should be left open and must not be filled by any sealant, silicone or other adhesive. A floated installation should not be fixed to the subfloor with nails, glue, screws or in any other way.

STEP 3:

Euro-ProLoc Engineered Timber flooring must be installed over a solid, self-supporting subfloor (particle board/chip board/concrete). It CANNOT be installed directly over joists. In case of other types of existing floor coverings, these must be removed. No signs of mould and/or insect infestation should be present. Make sure the subfloor is level and nail/screw down any loose parts. When laying a floating floor, in case of textile or other vapour-permeable floor coverings, it is necessary to remove both the floor covering and its base. In a floating installation, it is always necessary to use an underlay that has a plastic backing which will act as a moisture barrier. Install the new floor at ninety degrees to the existing subfloor. Any crawl space under the wooden subfloor must be ventilated. Remove any obstacles and make sure there is sufficient ventilation (min. 4 cm² of ventilation opening/ m² of floor). The moisture content of the wood cannot exceed 10%.

**STEP 4:**

The entire subfloor must be carefully checked for any type of unevenness. Use a straight edge of at least 1 metre to make sure there are no dips or humps of more than 2 mm over a 1 metre line. Any peak higher than 1.2 mm within a 250mm radius must also be removed. If necessary, use a

Euro-ProLoc
Premium Oak Flooring



PO BOX 64041, Botany, Auckland
SHOWROOM: 34b Allens Road, East Tamaki

P: 272 2890 **F:** 272 2892
W: www.jhf.co.nz **E:** sales@jhf.co.nz

grinding machine to remove any humps, and use a levelling compound to build up any hollow spots to achieve the correct evenness of the subfloor.

STEP 5:

To achieve optimal sound reduction, best walking comfort, avoid squeaking and to level minor unevenness, we strongly recommend using a 2mm Accoustic underlay. If you are floating the floor over a screed (a cement based subfloor), or when underfloor heating is involved, a vapour barrier must be installed. You must use an underlay with a minimum 0.2 mm PE-film damp screen. You must ensure the PE-film overlaps with a minimum of 200 mm. In case of a floating installation with any other type of underlay that is not a Quick-Step underlay the same technical specifications must be met. In case of problems, with the underlay being the cause, no warranty will be valid.

STEP 6:

Euro-ProLoc engineered timber flooring must not be installed in a typical wet room or in rooms with a floor drain. An installation directly on floor joists is prohibited.

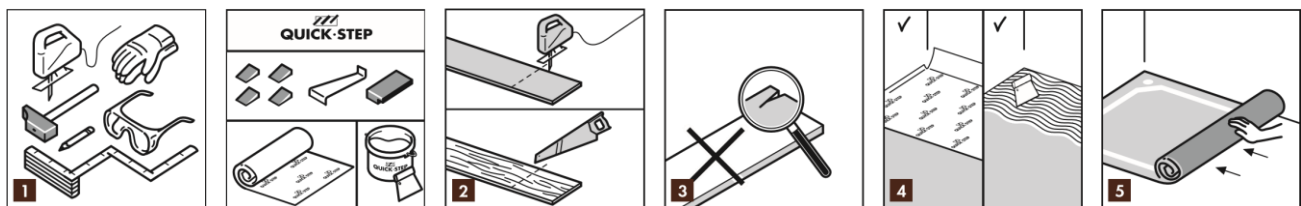
STEP 7:

Mineral subfloors such as concrete must be sufficiently dry prior to installation (< 2,5% CM / 75 % RH). If the moisture content is higher, or may become higher, other types of damp proofing must be used.

STEP 8:

Plan the installation direction of the planks carefully before start up. Normally we recommend installation parallel to the incoming light. If the room is long and narrow like in a hallway we would install parallel to the long walls. Be aware of the fact natural colour will be affected by sun light (discolouration by UV light is inevitable). This will lead to natural fading and colour changes which are not a product fault.

INSTALLATION



STEP 1:

Euro-ProLoc Engineered timber floors are easy to install and require no expensive tools. In addition to a few common DIY tools (folding rule, pencil, hammer, handsaw or jigsaw, carpenters square and possible power drill and hand gloves), you only need the a few basic installation tools, such as a tapping block, pull bar and spacers. Be sure you have all tools available before starting the installation.

Euro-ProLoc
Premium Oak Flooring



PO BOX 64041, Botany, Auckland
SHOWROOM: 34b Allens Road, East Tamaki

P: 272 2890 **F:** 272 2892
W: www.jhf.co.nz **E:** sales@jhf.co.nz

STEP 2:

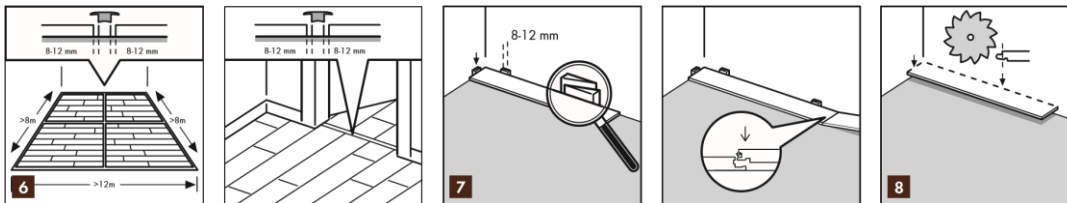
When cutting the Euro-ProLoc engineered flooring plank, be sure you are not creating splinters or chipping when cutting. If using a handsaw keep the decorative surface face-side up. If using a jigsaw keep decorative surface down.

STEP 3:

Every Euro-ProLoc engineered wood plank is methodically checked for any imperfections before being packed. Still, packs can be damaged during transportation or when the packs are opened. Do not install a plank with a damaged surface, edge or click joint. Carefully inspect each plank before installing. A Euro-ProLoc box can contain planks that are of multiple lengths - shorter begin/end pieces to ease your installation. The amount of shorter begin/end pieces per box can vary between two and three. Cumulative lengths of all shorter pieces will always be equal to the length of one standard plank. Be aware of the fact wood is not a homogeneous material. There will be differences from plank to plank as there are differences from tree to tree. These aspects provide you with the warm and natural feeling a parquet floor has to offer. Knots and cracks will also appear depending on the grading and the chosen range. This is natural and will not be considered as a product fault. Therefore always be sure you have got the right impression of the floor and information from the dealer before installation. An installed plank is considered as accepted and cannot be claimed. We recommend to mix the boards, taking planks out of different boxes at the same time when installing.

STEP 4:

Euro-ProLoc Prefinished Engineered timber flooring can be installed floated or glued down.

STEP 5:

If you choose to install a floating floor you must lay the first section of underlay parallel to the length of the planks to be installed. Gradually add the next sections of underlay as you lay the parquet panels. It is vital that you use a levelling underlay to smooth away any unevenness in the floor base. A vapour-tight foil should be used to protect the Euro-ProLoc parquet against raising damp or condensation when installing on screed, concrete/cement based subfloors and when under floor heating is involved.

STEP 6:

With room lengths of more than 12m and widths of more than 8m, an intermediate expansion joint should be fitted. Expansion and contraction are linear so the greater the surface the larger the expansion joint needs to be. An expansion joint must be used in typical doorways and room angles. Parquet floors are not suitable for use in damp areas like bathrooms and saunas. Before starting carefully measure the length and the width of the room to plan a precise lay-out to achieve a balanced appearance of the floor. This will ensure also you won't end up with the last row being too narrow. If the last row would be less than 40 mm the installation will be easier if you cut down the planks of the first row in the width.

Euro-ProLoc
Premium Oak Flooring

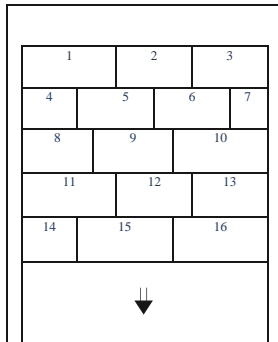


PO BOX 64041, Botany, Auckland
SHOWROOM: 34b Allens Road, East Tamaki

P: 272 2890 **F:** 272 2892
W: www.jhf.co.nz **E:** sales@jhf.co.nz

STEP 7:

Often the installation is done parallel to the long walls of the room. The most common direction of installation of all types of wood floors is from left to right with the tongue side (A) facing the starting wall. The planks should be installed facing the tongue side (A) to the wall. Always remember the spacers to ensure your expansion gap! Thanks to the "Multifit" patent the installation is very easy. This patent makes it very simple to dismantle a plank if needed without destroying the connection mechanism. The end joint can be assembled in different ways by folding down angling, sliding or tapping in horizontally. The quickest, easiest and most secure way is by folding down. A rubber hammer can be a handy tool to double check the joints and gently tap them if needed.

STEP 8:

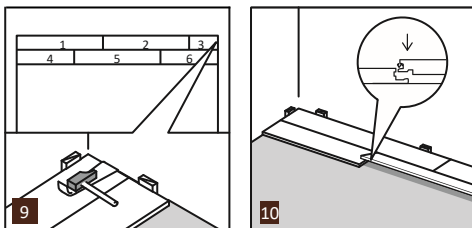
Narrow down the width on the first row or as a minimum cut off the tongue to achieve the first distance to the wall. If the wall is curved or uneven the first row has to be cut and copy the contour of the wall. Use spacers! Cut off the tongue on the first plank also on the short side. This plank will then have the plastic tongue in the end to the right.

STEP 9:

Install the first 2 rows in accordance to the illustration. We recommend the overlap/staggering between end joints to be about 1/3 of the plank length but never less than 300mm. Installing the first 2 rows like shown will help keep a straight line to start the rest of the installation. The cut-off from the first and second row should normally be perfect as starting planks in the 3 and 4 row. Always remember using the spacers to keep the correct distance to the walls.

STEP 10:

Lift the connecting plank up in an angle of about 20-30 degrees, push it into the long side groove and slide it gently towards the left until the plank ends meet. Push the plank firmly downwards to the floor and the Multifit system will lock the joint perfectly in the end. Always check every joint before continuing (gently tap with rubber hammer and tapping block if needed).



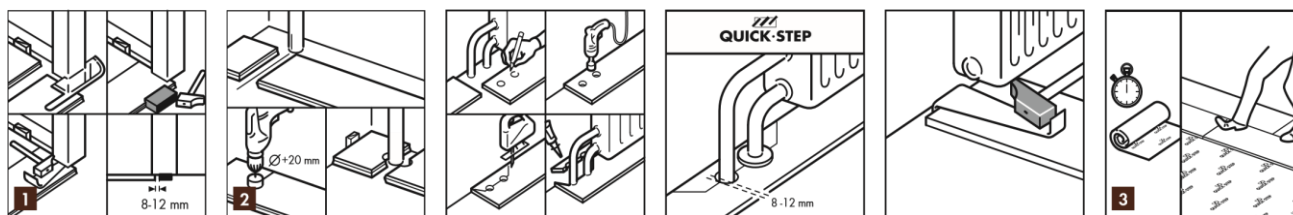
Euro-ProLoc
Premium Oak Flooring



PO BOX 64041, Botany, Auckland
SHOWROOM: 34b Allens Road, East Tamaki

P: 272 2890 **F:** 272 2892
W: www.jhf.co.nz **E:** sales@jhf.co.nz

FINISHING



STEP 1:

For a nice finish where the next flooring meets a threshold we recommend undercutting the mouldings of the door. To secure the correct cut off turn a plank upside down and place it on the floor up to the frame. Then place the hand saw flat against the plank and simply cut through the frame/moulding as shown. Remove the cut out and vacuum away dust. Then you can simply slide the floor underneath the frame/moulding and make a perfect finish.

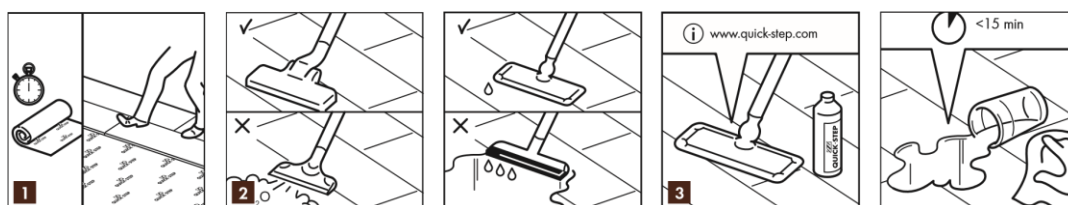
STEP 2:

To install Euro-ProLoc wood flooring around pipes, carefully measure and mark the planks with the exact centre point for each pipe. Drill a hole at each of the marked points that is equivalent to the diameter of the pipe + 16 mm in dry climate and 24 mm in wet climate. If located on the long side of the plank make a 45 degree cut from each hole to the edge of the plank and then cut between the holes as shown. If located on the end of a plank make a straight cut across the plank. Install the plank. Then using some regular wood glue along the cut edges of the piece you've cut out and glue the piece in place where it belongs. Be sure no glue comes between the cut out piece and the subfloor. Use spacers to secure a tight glue point and remove any glue on the floor surface directly with a damp cloth. The gap you have created between the pipes are to ensure the floor can move as expected from season to season. These cannot be filled with any sealant, silicone or other adhesive.

STEP 3:

Inspect the final surface of the installed floor, remove all spacers and ensure any trim bars are secure.

MAINTENANCE



STEP 1:

When installing a floating floor you can walk on it during installation and immediately afterwards. After installation it is recommended to have circumstances of 15 - 22°C and a RH level between 25-85%. During winter time the air in the rooms is usually extremely dry, for this reason it is strongly recommended to use humidifiers in order to obtain a constant humidity level. In the summer and autumn, when there is a high relative humidity the room should be well ventilated.

Euro-ProLoc
Premium Oak Flooring

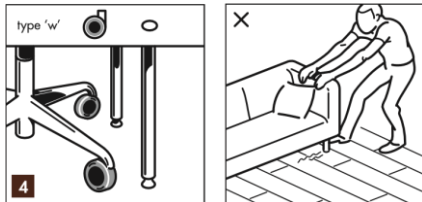


PO BOX 64041, Botany, Auckland
SHOWROOM: 34b Allens Road, East Tamaki

P: 272 2890 **F:** 272 2892
W: www.jhf.co.nz **E:** sales@jhf.co.nz

STEP 2:

To remove dirt and dust from the floor use a dry mop, a brush or a vacuum cleaner. Make sure the vacuum cleaner is equipped with soft wheels and a special parquet brush to avoid scratching your floor. Never use a steam cleaner/mop to clean your wooden floor. For the first cleaning of the floor make sure to first remove ALL dust and dirt before using a cloth. Wet maintenance of a wooden floor is absolutely forbidden.

STEP 3:

Only use the recommended cleaning products for floor maintenance. Remember that using other cleaning products may damage your floor. Always wipe the floor dry immediately so that no more moisture or liquid is visible on the floor. Bevelled parquets must only be cleaned with a dry cloth.

STEP 4:

Castor chairs must have castors of the so called type “soft wheels” and a plastic protector mat should be placed under the area where the chair is placed/used. All furniture legs should be protected by felt pads to avoid scratching the lacquered/oiled surface. Avoid sliding/dragging furniture over the wooden surface to avoid possible scratching. Lifting the furniture is recommended. Always place a quality door mat at any entrance door to avoid introduction of sand, dirt or water which might create scratches.

STEP 5:

Special cleaning instructions are at hand with your Quick-Step dealer or on the website of these products. Please read them with care before maintaining your lacquered/oiled surface.

STEP 6:

The manufacturer bears no responsibility for problems or damage which arises through inexpert preparation of the subfloor, the floor installation itself or exposure of the floor to unsuitable climatic conditions/maintenance. The right for compensation for damaged or differently coloured panels does not extend to parquets which have already been installed. In non-standard cases we recommend you to inform yourself sufficiently with regards to the specific requirements of a construction project. In the event of further questions please contact your retailer.

Euro-ProLoc
Premium Oak Flooring



PO BOX 64041, Botany, Auckland
SHOWROOM: 34b Allens Road, East Tamaki

P: 272 2890 **F:** 272 2892
W: www.jhf.co.nz **E:** sales@jhf.co.nz